



MONTHLY MEMBERSHIP PROGRESS REPORT

District 2 S1

Results as of: 4/30/2016

GMT: HAL GRIFFIN

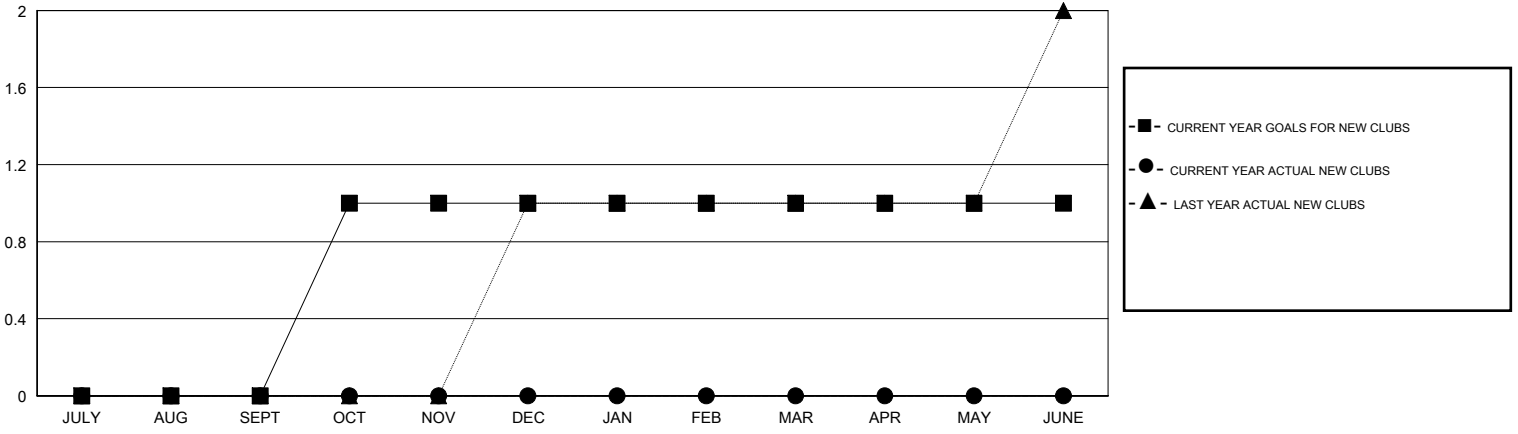
LOCATION TEXAS

GMT CA 1

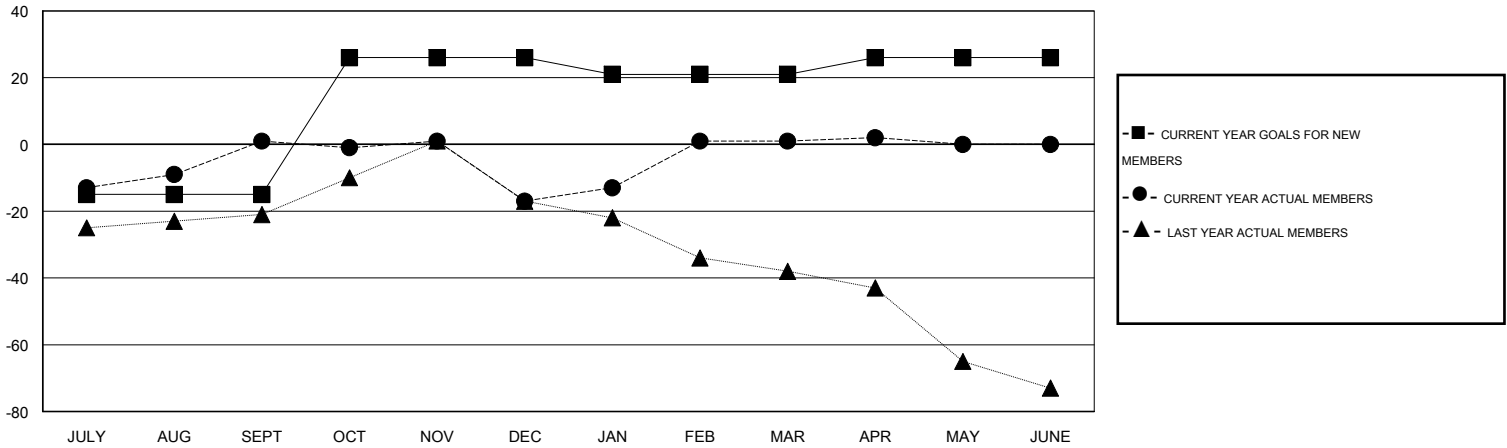
Clubs				
RESULTS FOR 2015-2016				
QUARTER	NEW CLUB GOAL	NEW CLUBS	DROPPED CLUBS	NET GAIN/LOSS
JULY/AUG/SEPT	0	0	0	0
OCT/NOV/DEC	1	0	1	-1
JAN/FEB/MAR	0	0	0	0
APR/MAY/JUNE	0	0	0	0

Members				
RESULTS FOR 2015-2016				
QUARTER	NEW MEMBER GOAL	CHARTER AND NEW MEMBERS ADDED	DROPPED MEMBERS	NET GAIN/LOSS
JULY/AUG/SEPT	-15	60	59	1
OCT/NOV/DEC	41	46	64	-18
JAN/FEB/MAR	-5	89	71	18
APR/MAY/JUNE	5	20	19	1

GOALS AND ACTUAL NEW CLUBS CUMULATIVE



GOALS AND ACTUAL MEMBERS CUMULATIVE



DROPPED CLUBS: 1

37 CLUBS OF 53 ADDED 1 OR MORE NEW MEMBERS

GENDER DISTRIBUTION	
MALE	1,266 (72.93%)
FEMALE	470 (27.07%)

DROPPED MEMBERS	
DECEASED	14
CLUB CANCELLED	14
OTHER	185
TOTAL	213

[CLICK HERE FOR HEALTH ASSESSMENT DATA](#)

FAMILY UNIT MEMBERS	256
HEAD OF HOUSEHOLD	125
NON-HEAD OF HOUSEHOLD	131